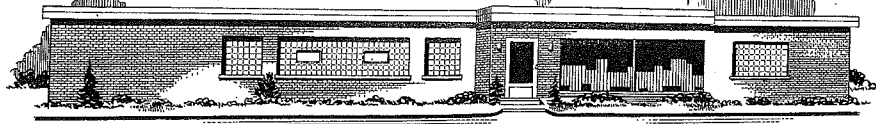


# Jump River Electric Cooperative, Inc.



1102 W. 9th Street North P.O. Box 99 Phone 715-532-5524

LADYSMITH, WISCONSIN - 54848

April 12, 1973

Miss Shelley Rydlund  
900 Sabin Avenue East  
Ladysmith, Wisconsin 54848

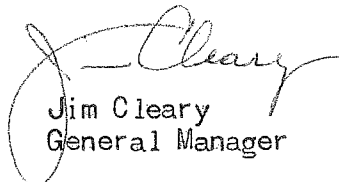
Dear Shelley:

It was certainly nice hearing from you and I know you are looking forward to having your father as a Mystery Guest on the 18th of May so we will plan our work accordingly.

Your father plays an important part in our operations as he is one of our top linemen. It will not be too easy to let him off but as long as he is going to be with you and talk to your class about his work, we will mark him down for public relations for that afternoon.

I know your class would be interested in what he has to say as it would be almost impossible to get along without electricity as it does so much for us.

Yours truly,

  
Jim Cleary  
General Manager

JC/blc