

PICTURE THIS!

Who knew we had so many talented photographers amongst our JREC membership? To say picking a winner of our most recent photo contest was a challenge is an understatement. Wow!

Please continue to capture the beautiful countryside, nature, and events happening throughout JREC's service territory through the lens of your camera for our next contest. The photo contest winners are as follows:



First place: Marcia Suchy of Couderay, Evening Grosbeak on Winterberry



Second place: Kevin Edeker of Hayward, The View



Third place: Georgiann O'Bryan of Bruce, Waterlily Reflection



GETTING STRATEGIC TO FULFILL JREC'S MISSION

By Kurt Harris, General Manager/CEO

Our mission at Jump River Electric is to provide reliable, safe, sustainable, and affordable utility services to the communities we serve. To successfully fulfill this mission, the board of directors and management staff participated in a strategic planning session to closely examine the operation and identify top priorities for the cooperative. The outcome was a focused direction in the following five key areas:

- Long-Term Financial Stability
- Location-Based Applications
- Member and Community Collaboration
- Safety
- Electric System Reliability

Author Alan Lakein once said, "Planning is bringing the future into the present so that you can do something about it now." We believe that this plan will prepare us for changes in our industry and help us better serve you now and in the future.

Community Collaboration Begins

Another way we are striving to fulfill that mission is by forming partnerships that enhance the lives of our members. I am excited to share with you an ongoing project with Charter-Spectrum, allowing them to attach to our utility poles. This will enable them to bring high-speed internet to the JREC members in Taylor County at no additional cost to the cooperative. The project is expected to take approximately three years, attaching to roughly 3,500 poles, and have a positive impact on the membership.

HELP KEEP RATES DOWN Do the Summer Shift

There may be days when you hear a PEAK ALERT on the radio. This alert is issued due to high demand for electricity on the regional grid. Elevated peak demand leads to stress on the electric grid and higher power costs. When you hear this message, please do the Summer Shift by shifting your non-essential usage until after 7 p.m.



Changing the time of day you use energy can have a direct impact on the cost and reliability of your power.

ONE CHAPTER CLOSES AND ANOTHER BEGINS

For 18 College-Bound Member-Students

School will not only begin soon for our local students, but many members or their students will be continuing their education in a post-secondary school this fall. Since 1984, Jump River Electric has used a portion of its Federated Youth Foundation (FYF) funds to provide scholarships to area high school students and adults wishing to further their education. Each student pictured here received a \$1,000 scholarship from JREC.

Monies for these scholarships come from FYF, which is funded through unclaimed capital credits. Go to jrec.com/scholarships for details on the scholarship opportunities available to our members.

There were no applicants from Chetek-Weyerhaeuser, LCO, Rib Lake, and Stanley-Boyd high schools.



**Ella Luetzgerodt
Bruce**



**Samuel Cegler
Flambeau**



**Emily Dean
Flambeau**



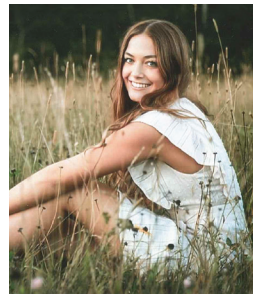
**Heather Hecker
Flambeau**



**Ellie Drier
Gilman**



**Kiersten Webster
Gilman**



**Callie Asp
Hayward**



**Mallory Farley
Hayward**



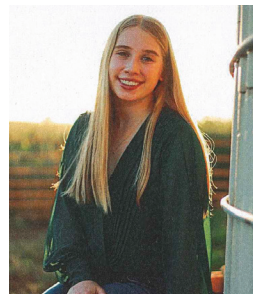
**Madison Woller
Hayward**



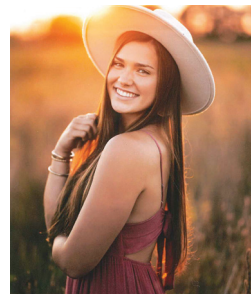
**Karly Kirkman
Holcombe**



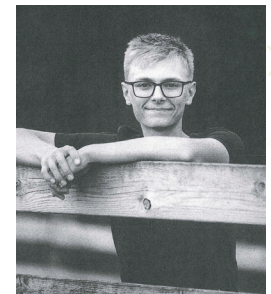
**Hannah Wincek
Holcombe**



**Cadence Calkins
Ladysmith**



**Elle Nisbit
Ladysmith**



**Carter Roberts
Winter**



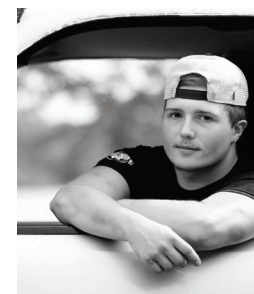
**Emma Grunseth
Non-traditional**



**Kathryn MacPherson
Non-traditional**



**Jaydian Weaver
Home-schooled**



**Logan Poradish
Lineworker Scholarship**



APPRECIATING OUR MEMBERS

Thank you for coming to the picnic!

What a great way to end June with three fun-filled days celebrating our members. Member Kathy Moreau summed up Member Appreciation Days well when she said, “Thank you for hosting the customer appreciation day lunch. The food was great, and it was nice to get out to see the staff, some board members, as well as friends and neighbors! I enjoyed it!”

Members were able to play the disc drop game and take home either a pizza cutter, multi-tool, flyswatter, or some other JREC swag. One member thanked us for making everyone a winner that day!

A daily prize drawing was held at each location for the chance to win a JREC logoed camping chair, blanket, and drinking bottle. John Prasnicky, Sheldon; Jean Brandt, Couderay; and Terry Larson, Bruce (left) were the three lucky winners.



WEEKEND WARRIOR EFFICIENCY PROJECT

Finding and fixing air leaks

Feeling a draft? Air leaks can make your home uncomfortable and cost you money. According to EnergyStar.gov, you can potentially save as much as 15 percent on cooling and heating costs each year by properly sealing and insulating your home.

If you've lived in your home for a while, you probably know where the air leaks are. If not, on a windy day you will want to shut all windows and doors and turn off all appliances. Then hold a lit incense stick next to potential leakage spots. If the smoke wavers or is sucked out of or blown into the room, there's an air leak around that window or door. Seal all leaks with weather stripping and caulk.

Air leaks can also be hidden in attics and basements. Locating these leaks can be more difficult. A DIY guide can be found at jrec.com/home-energy-savings. This guide will help you find these leaks and seal them with appropriate materials. You can also watch a video on how to "Rule Your Attic" here!



KNOCK, KNOCK Who's there?

It could be our load management technician or a lineman stopping by to perform a test on your dual fuel receiver or check our meter. The receiver is the gray box that is on the outside of your house. Please don't be alarmed if you see a JREC truck in your driveway at some point throughout the year.

Dual Fuel members who are submetered should always leave power on to this meter. You may turn off the circuit breakers that control the heaters on the load management program, but the meter power should remain on.

DID YOU KNOW?



The phone number listed on your JREC bill stub is the primary telephone number we have for your account. Please notify us if this number has changed or is no longer the best number to reach you at.

JREC uses this same number to contact you about planned outages or account questions. Keeping this number up to date will also help expedite calls made to our after-hour call center (866-273-5111) or when you pay your bill through our Pay-By-Phone service at (888-255-6489).

TIP: Add JREC to your phone contacts for ease in reaching us during and after business hours.

SAFETY FIRST, RECREATION ACTIVITIES SECOND

The Dairyland Reservoir is located on the Flambeau River near Ladysmith and is a popular lake area. Water from the 1,900-acre reservoir supplies the energy to the Flambeau Hydroelectric Station power plant and is a popular recreation area within our community. Dairyland Power Cooperative has owned and operated the 17.6-megawatt hydroelectric station since 1951.



Safety awareness near hydroelectric dams is critically important when boating, swimming, or fishing in the general area. Every year, people are seriously injured or killed at dams. Most of these accidents could be avoided by simply staying clear of the restricted zones at dams, understanding the dangers dams can create, and obeying all warning devices. Follow these rules around dams:

- Stay away from any flowing spillway. Dangerous, reverse currents in the tailwaters of dams can cause fatalities.
- Stay back from dry riverbeds below dams. They can quickly change into rapidly flowing waterways.
- Always stay a safe distance outside of warning signs, buoys, and barriers.
- Stay away from restricted areas. Currents near dams are extremely hazardous.
- Look for and obey all warning signs.
- Wear a personal flotation device.
- Avoid water recreation on rivers with high flows or flooding conditions.
- Never anchor a boat below a dam. Rapid surges in water levels can pull an anchored boat under water in seconds.

1102 West 9th Street North • P.O. Box 99, Ladysmith, WI 54848
715-532-5524 (Ladysmith); 715-634-4575 (Hayward) • www.jrec.com

After-hour emergency service, call 866-273-5111

Pay by Phone: 888-255-6489


Find us on Facebook 

Denise Zimmer, Editor



Jump River Electric
Cooperative, Inc.

Since 1938

Your Touchstone Energy® Cooperative 

JREC is an equal opportunity provider and employer.