



EPA'S POWER PLANT RULE THREATENS ELECTRIC RELIABILITY



By Kurt Harris, General Manager/CEO

At Jump River Electric Cooperative, keeping the lights on at a cost you can afford is the focal

point of everything we do. Transparency is one of our core values, so in addition to sharing co-op successes, I believe we also have a responsibility to tell you about the challenges.

In May, the U.S. Environmental Protection Agency (EPA) issued a rule that impacts energy production from power plants. The power plant rule will undoubtedly threaten access to reliable electricity for our local community and communities across the country.

The rule constrains existing coal and new natural gas plants by requiring them to install carbon capture and storage (CCS)—a technology that has potential but has not been proven to be viable as required. No power plant in North America currently uses CCS at the scale and levels mandated by EPA. When power plants aren't able to comply with EPA's CCS requirements, they will be required to shut down, significantly limit operations, or switch fuels. These unrealistic standards will force the unnecessary and early shutdown of many power plants that currently provide reliable electricity 24/7.

Renewable sources, such as solar and wind, are important components of our overall generation mix. But given the intermittent nature of these energy sources, we simply cannot depend on them because the wind doesn't always blow, and the sun doesn't always shine. The need for always-available power-generating resources is still essential.

The timing of the power plant rule is equally troubling. At the same time the EPA is leading our nation down the path to fewer power plants, utilities are facing a surge in electricity demand driven

by the onshoring of manufacturing, the growth of the American economy, and the rapid expansion of data centers to support artificial intelligence, e-commerce, and cryptocurrency.

Many states have already experienced rolling outages, and if the supply of electricity is further threatened by the EPA's power plant rule, the problem will only get worse. In fact, the North American Electric Reliability Corporation (NERC), the nation's electric reliability watchdog, recently forecast that over the next five years, all or parts of 19 states are at high risk of rolling power outages during normal peak electricity demand conditions.

It's also no secret that when demand is high and supply is low, costs go up. We're concerned about threats to reliability as well as cost increases for our members.

I don't say all of this to worry you, but I do want our members to understand the challenges that lie ahead. Just as we've always done, we will look for solutions that serve our members best.

We are joining electric co-ops across the country to fight these regulations, and we are working with our local elected officials to help them understand the consequences this would have on all Wisconsinites.

Co-ops are no strangers to innovation, and we're taking proactive steps to address today's energy challenges and tomorrow's energy needs. We offer load management programs, and we're working on a local solar project that will interconnect a 2.5-megawatt solar array to our system. We'll continue to explore new technologies and strategies that bolster reliability and our local grid.

Electric cooperatives like Jump River Electric deliver power to 42 million Americans. At the end of the day, our top priority is to meet our members' energy needs, and we must have reliable electricity available to do that.

If you're interested in learning more about policy impacts on power reliability, or to make your voice heard on this matter, visit voicesforcooperativepower.com.

IMPACTS OF THE EPA'S POWER PLANT RULE

The Environmental Protection Agency's (EPA) power plant rule threatens access to reliable electricity for millions of Americans. The EPA's power plant rule will:



- 1 Force the premature closure of many power plants that currently provide electricity 24/7.
- 2 Mandate the deployment of unproven carbon capture and storage technology.
- 3 Jeopardize the reliability of the grid at a time when America is already facing a surge in electricity demand.
- 4 Heighten the risk of rolling power outages to relieve pressure on the electric grid.
- 5 Increase costs for consumers as utilities are forced to pay for new power generation to comply with the EPA rule.



HELP FOR THE NEXT CHAPTER

Over \$300,000 in scholarships has been awarded to members and their students since the first scholarships were presented in 1984. Each recipient pictured here received a \$1,000 scholarship to help fund their next chapter in life as they further their education this coming year. Scholarships are funded through JREC's Federated Youth Foundation from unclaimed capital credits. There were no applicants from Chetek-Weyerhaeuser, Rib Lake, or Winter high schools.



**Caden Gerber
Bruce**



**Brooke Zeman
Bruce**



**Hannah Blackstock
Flambeau**



**Alyssa Kopacz
Flambeau**



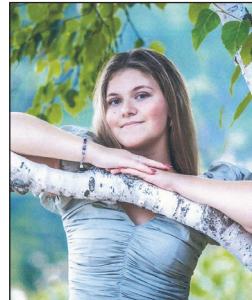
**Brooklyn Ludescher
Flambeau**



**Adam Draeger
Gilman**



**Dalton Wisocky
Gilman**



**MacKenzie Forrester
Hayward**



**Gayge Schroeder
Hayward**



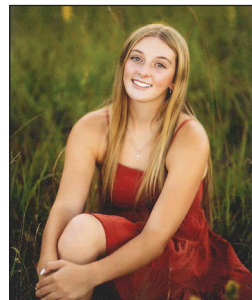
**Luke Snider
Hayward**



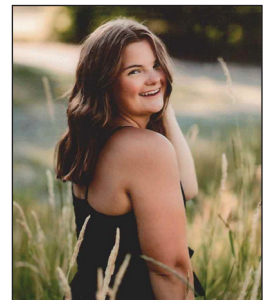
**Dana Brosted
Holcombe**



**MiKaylah King
Holcombe**



**Breann Hillman
Ladysmith**



**Michelle Wallin
Ladysmith**



**Aurelia Weaver
LCO**



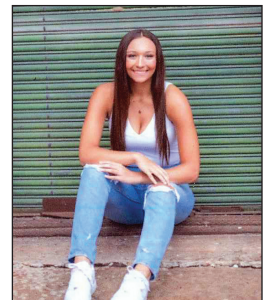
**Megan Okerglicki
Stanley-Boyd**



**Riley Anderson
Lineworker Scholarship**



**Shaniah Brandt
Non-traditional**



**Emma Grunseth
Non-traditional**



FUTURE LEADERS PARTICIPATE IN YLC

Over 70 high school students from across Wisconsin attended the Youth Leadership Conference (YLC) held this past July at UW-Stout. This conference is sponsored by Wisconsin Electric Cooperative Association and Wisconsin co-ops, including Jump River Electric. This three-day conference is jam-packed with activity-filled events and motivating workshops that help students hone in on their leadership skills and learn how they can positively impact their peers and local communities.



JREC YLC representative Casey Luther of Ladysmith (above, center) said, "I would recommend attending YLC because it opened opportunities to meet new friends and learn about co-ops and their importance. The whole experience is something I will never forget!" You can find more information on how you can attend this conference next year at jrec.com.

CAMPUS SAFETY AWARENESS MONTH

Be aware of your surroundings, especially when listening to music or texting.



Help keep your college student safe by learning more about dorm room/apartment safety. When you are shopping for school supplies, take time to discuss these safety tips with your child.

Electrical safety tips:

- For items that run on electricity, look for a safety endorsement label, such as UL.
- Never put a cell phone under a pillow or place it on or under bedding. It could overheat or catch fire.
- Extension cords are only for temporary use, so unplug when not in use.
- Avoid overloading outlets, and use power strips with an over-current protector that will shut off power if too much current is drawn.
- Hang decorative lights with plastic hooks, not nails or tacks.
- Use light bulbs with the correct wattage for lamps.
- Discard or repair damaged electronics.

General safety tips:

- Know where the public safety department on campus is and learn how it functions.
- Locate emergency call buttons or phones across campus.
- Walk with a friend and be aware of your surroundings.
- Attend events with at least one person you know and trust.
- Know what to do if there is a fire, including escape and meeting plans.

HARRIS ELECTED TO WECA BOARD

General Manager and CEO Kurt Harris was recently elected by his peers and other electric co-op directors to the Wisconsin Energy Cooperative Association (WECA) board. WECA is the statewide organization that advocates for Wisconsin's electric co-ops and others with interests and needs related to all aspects of the electric power industry.

Harris said, "A member-focused philosophy will drive my contributions and decision-making on this board. The first question I ask my team and myself

is always, 'Does it benefit the members?' By continuing to ask this question, we can provide the best service possible to the WECA membership.

"The electric cooperative world is far different today from when I first started working at JREC over 19 years ago. We must continue to advocate and support the cooperative mission. It is important that we look towards the future and make sure we are well-posed for whatever that may bring."



Viasat UNLIMITED INTERNET IS HERE!

Faster Speeds and More Data!

***Receive FREE equipment *FREE standard installation *Shorter Contract**
 Packages starting as low as \$69.99. Taxes apply. Special includes free equipment (\$49.99 + tax value) and a 12-month contract commitment. Package availability is based on where you live. Special ends September 30, 2024. See jrec.com/viasat for details.

For as little as 50 cents a month, you can support RENEWABLE ENERGY



If you are interested in getting more of your electricity from renewable resources, Jump River Electric Cooperative has the program for you. It is called Evergreen.

Evergreen provides an opportunity for members to voluntarily contribute to the increased use of renewable energy sources. This program offers an easy way for any member to support renewable energy, without the burden of owning their own system. Evergreen comes from regional solar, wind, hydro, and waste-to-energy renewable resources.

Participating in this program is easy. Subscriptions are available in monthly 100 kWh blocks for 50 cents a block. To sign up for Evergreen, go to jrec.com/evergreen-program and complete the sign-up form. For more information about this program, contact JREC at 715-532-5524.

PHOTO CONTEST DEADLINE DRAWING NEAR

Your chance to win a \$50 bill credit

Submit your favorite three photos taken within the JREC service territory to dzimmer@jrec.com by September 25, 2024, to enter the contest. Go to jrec.com/photo-contest for contest guidelines. Three bill credits of \$50, \$30, and \$20 will be awarded for first- to third-place winners, respectively.

1102 West 9th Street North • P.O. Box 99, Ladysmith, WI 54848
 715-532-5524 (Ladysmith); 715-634-4575 (Hayward) • www.jrec.com

After-hour emergency service, call 866-273-5111
 Pay by Phone: 888-255-6489

Find us on Facebook, X, and Instagram

Denise Zimmer, Editor



Jump River Electric Cooperative, Inc.

Since 1938

Your Touchstone Energy® Cooperative

JREC is an equal opportunity provider and employer.



Scan the QR code to find us on Facebook (left) and Instagram (right).