

## NOMINATION PETITION DEADLINE FEBRUARY 25

### DISTRICTS

3 | 4 | 9

2020

**February 25** is the deadline for handing in your member-signed Petition for Director Nomination in order to become a director candidate. Petitions were mailed to members who reside in districts 3, 4, and 9 in early January. This is also the deadline to submit proposed resolutions that are to be considered at the annual meeting.

## PLEASE JOIN US FOR OUR

2020

## ANNUAL MEETING

**Saturday, April 25, 2020**

Registration at 9 a.m. • Business Meeting at 10 a.m.  
Ladysmith High School Auditorium, Ladysmith, WI

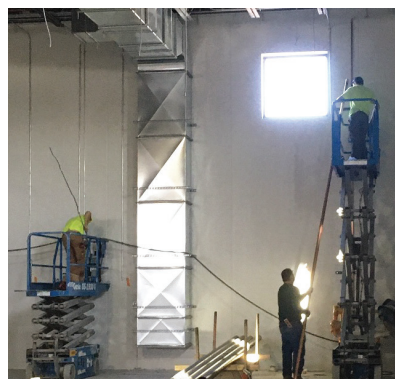
*Chicken dinner to follow meeting.  
Door prizes and other prizes to be given away.*



**Jump River Electric  
Cooperative, Inc.**

Since 1938

Your Touchstone Energy® Cooperative



### Building Update:

Various contractors are busy working inside finishing electrical, plumbing, and painting; adding fiber and cabinetry; running cable; and much more. This project is on budget and ahead of schedule.

MY CO-OP

## YOUTH LEADERSHIP CONGRESS

UW-River Falls • July 14–16



The annual **WECA Youth Leadership Congress** is a dynamic three-day event for youth leaders across Wisconsin to develop their **leadership skills** while learning about the purpose, operation, and scope of **cooperative businesses**. If you're a sophomore or junior, check with your high school guidance counselor for information.





# GET READY, 2020 COLLEGE-BOUND STUDENTS

## JREC to award \$10,800 in scholarships

Don't forget, after applying to college and picking out your major, to look to JREC to help fund your college education. Scholarships are available to active members and dependent students of active members. The JREC board of directors increased the 2020 scholarship award amounts, as giving back to the community is one of the cooperative principles; furthering the education of our members and their youth is another. JREC is proud to be able to help our members and their students meet their educational goals. The scholarship program is funded entirely from the Federated Youth Foundation, which receives its money through unclaimed capital credits.

### \$500 Scholarships Available to High School Seniors

Graduating seniors from the below list of high schools and whose parent(s) or legal guardian(s) are active members of JREC can apply by contacting their school's guidance counselor. Scholarships will be awarded as follows:

- **Two \$500 Scholarships Per School:** Bruce, Flambeau, Gilman, Hayward, Ladysmith, Lake Holcombe, and Stanley-Boyd
- **One \$500 Scholarship Per School:** LCO, Rib Lake, and Chetek-Weyerhaeuser

**\$800 Lineworker Scholarship** One \$800 JREC-John Hirschfeld Jr. Memorial Lineworker Scholarship is available to active members or their dependent students who attend a one-year Electric Power Distribution/Lineworker post-secondary school program.

Graduating seniors applying must attend one of the ten schools listed previously. Winter High School graduating seniors are also eligible.

### \$500 Non-Traditional Scholarships

A \$500 JREC-Allen Beadles Memorial scholarships will be awarded to two \*at-large/non-traditional active members who are continuing their post-secondary education.

**\$500 LCO Community College Scholarship** The JREC-Charles Kagigebi Memorial scholarship will also be available to one \*at-large/non-traditional active member attending the LCO Community College.

*\*An at-large/non-traditional student is defined as follows: A dependent student whose parent(s) or legal-guardian(s) or self is an active member of JREC and has received his/her GED or high school diploma for a minimum of one year prior to applying for the scholarship.*

Applications for high school scholarships can be obtained from the school's guidance counselor. All other scholarship applications can be found online at [jrec.com/scholarships](http://jrec.com/scholarships). Application deadlines vary by scholarship type and school. Please call 715-532-5524 if you have questions.



## HOLIDAY HAPPENINGS

JREC enjoyed celebrating the holidays with our members. We hope you had a wonderful and safe holiday season! Here are some photos of how we celebrated the season of giving with those in our community.

### Hat, Scarf, and Mitten Tree—

Many hats, mittens, and a scarf were donated by our members during the month of December. As you can see in this photo, we had more than enough to complete our Christmas tree. These items were donated to local schools and a day-care center.



**Christmas Stocking Winners**—Santa's helpers did a great job again this year filling up this giant stocking full of toys for both girls and boys of all ages. Winners were 3-year-old Emmett from Glen Flora, 6-year-old Kiera from Sheldon, and 6-year-old Blaze of Hayward. All recipients were overjoyed to find that all the toys were going home with them. Blaze has three other brothers with whom he planned to share these toys (his excited 3-year-old brother Grydon is shown next to him). A special thank you goes out to member Mark Tamm of Hayward for donating two of his rocking moose again this year. He was featured in the December issue of this magazine. What a wonderful gift for the children.

## PUT MONEY BACK IN YOUR POCKET THROUGH THE ENERGY SENSE PROGRAM

Save more and spend less. How? By taking advantage of our Energy Sense Program. Not only can you receive money back in the form of a rebate, but you also spend less on energy when you utilize energy efficient items like those listed below. All incentives/rebates are available on products purchased and work performed from 1/1/20 until 12/31/20. Overall incentive rules, rebate details, forms, criteria, and documentation requirements can be found online at [jrec.com/energy-sense-rebates](http://jrec.com/energy-sense-rebates). Incentives and rebates are only available to active JREC members and are subject to change without notice.

**Energy Sense**  
Together we can... Together we will

### 2020 Energy Sense Incentives

#### Agricultural/Commercial/Industrial

Circulation Fan	Fans under 36" must be $\geq 18$ pounds force/kW Fans 36" & over must be $\geq 21$ pounds force/kW	\$1	inch
Exhaust Fan	Fans under 36" must be $\geq 18$ cfm/watt @ 0.05" SP Fans 36" and over must be $\geq 21$ cfm/watt @ 0.05" SP	\$1	inch
Electric Forklift Battery Charger	Must be "controlled" as defined by cooperative	\$200	each
Dairy Plate Cooler / Well Water Pre-Cooler		\$500	each
Dairy Refrigeration Heat Recovery with Electric Backup	Used with controlled electric water heater	\$300	each
Low/Zero Energy Livestock Waterer	500 watts or less, insulated tank	\$50	each
Scroll Refrigerant Compressor	\$1,000 cap per compressor	\$30	HP
Variable Frequency Drive (VFD)	\$1,000 cap per drive; minimum of 1 HP	\$30	HP

#### Electric Appliances

Clothes Dryer	Must be ENERGY STAR, must be electric	\$25	each
Clothes Dryer – Heat Pump	All heat pump clothes dryers qualify	\$50	each
Clothes Washer	Must be ENERGY STAR	\$100	each
Dehumidifier	Must be ENERGY STAR	\$25	each
Dishwasher	Must be ENERGY STAR	\$50	each
Freezer	Must be ENERGY Star and $\geq$ cubic ft.	\$25	each
Inductive Range	All inductive ranges qualify	\$25	each
Refrigerator	Must be ENERGY STAR and $\geq 10$ cubic ft.	\$100	each

#### Audits/Assessments

Audit Recommended Improvements	\$500 cap	varies	each
Compressed Air Audit	\$500 cap	varies	each

#### HVAC

Heat Pump – Air Source & Mini-Split	SEER 14+, HSPF 8.2+, or EER 11+	\$250	ton
Heat Pump – Commercial Air Source & PTHPs	< 20 tons: EER 11+ — 20 to < 60 tons: EER 10.5+ $\geq$ tons: EER 10+	\$250	ton
Heat Pump – Geothermal		\$500	ton
New Furnace with ECM Blower Motor	Variable speed motor (not multi-speed) "or" AFUE $\geq 95\%$ & Eae $\leq 670$ kWh/year	\$35	each

#### Lighting

LED Lamp (Residential & Non-Residential)	5 lamp minimum	\$1	lamp
LED Fixture (Non-Residential)		\$1	per 800 lumens
LED Exit Sign		\$5	sign
Occupancy Sensor	Doesn't include motion detector fixtures	\$5	each

#### Touchstone Energy® Home Program

New Home	Must meet 1 of 5 program/code requirements	\$500	each
----------	--	-------	------

#### \*Water Heaters

Commercial & Residential Water Heater 75–99 gallons	Uniform Energy Factor 0.88+ (Residential Only)	\$125	each
Commercial & Residential Water Heater 100+ gallons	Uniform Energy Factor 0.88+ (Residential Only)	\$300	each
Heat Pump Water Heater	Integrated (all-in-one) units, Uniform Energy Factor 2.00+	\$300	each
Solar Storage Water Heater w/Electric Auxiliary Tank	75–99 Gallons	\$125	each
Solar Storage Water Heater w/Electric Auxiliary Tank	100+ Gallons	\$300	each

\*Water Heaters= Additional rebates may be available if water heater is purchased from JREC.



## EMPLOYEE RECIPE CORNER

Meet Sebastian, your billing clerk who works out of the Ladysmith office. He grew up in Ladysmith and came back to live here following college.



Sebastian has been with JREC for over four years and has a wealth of knowledge and fun facts that the cooperative and his co-workers benefit from. Sebastian enjoys honing his golf skills during the summer and going to movies, no matter what the season. On occasion, he can also be found binge watching TV shows.

When asked to supply a recipe, he resorted to an all-American dish, meatloaf.

### Meatloaf

#### Ingredients:

1 lb. hamburger	1 Tbsp. Heinz 57
little yellow onion	steak sauce
(or to your liking)	Salt
1 egg	Pepper
½ row of crushed saltine	½ tsp. garlic
or Ritz crackers	powder

#### Directions:

Mix all ingredients and place in a 9X13 greased pan. Cook at 350 degrees for about an hour or until meatloaf is no longer pink in the middle.

## KEEP YOUR FURRY FRIENDS SAFE THIS WINTER

Winter weather—with its cold temperatures and with families spending increased time indoors—can bring its own set of safety hazards. From shock and fire risks to power outages, safety preparations and precautions are not only for people, but for pets as well. Take steps to ensure your furry family stays safe this winter.

Colder winter temperatures may introduce unfamiliar electrical devices—such as space heaters, heating pads, and electric blankets—into the home. Be on the lookout for potential hazards that may accompany such products and keep them away from curious pets.

Discourage pets from sleeping near or behind electronics or appliances. Many pets are attracted to the warmth, but this is a potential fire hazard. Block off appliances and electronics if you must.

Never let your pet nap on a heating pad or electric blanket, as this presents a risk of electrical burn and can also result in overheating the appliance, which may start a fire.

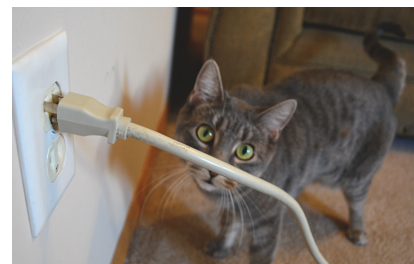
Keep electrical cords tucked away and out of sight of puppies and kittens. If you have difficulty getting your pet to stop chewing on the cord, you can paint it with a bitter-tasting deterrent or enclose the cord in a PVC tube or thick plastic sleeve.

Make sure all electronics are completely plugged into wall outlets. Partially exposed prongs are a hazard for curious puppies and kittens.

Winter storms can cause power outages. Be sure to include pets in your emergency weather plans. Keep supplies in your emergency kit for pets in preparation for bad weather. Make sure that it is stocked with at least three days' worth of food, water, and any medicine they may need.

After a storm, remember to use caution if you or your pets must go outside. Be on the lookout for downed lines, damaged electrical equipment, and other conductive materials that they may be in contact with. Stay far away from them and contact your utility immediately. Just because a line is down does not mean that it no longer carries an electrical charge.

For more electrical safety tips, visit [jrec.com](http://jrec.com) or [SafeElectricity.org](http://SafeElectricity.org).



## FUN ON THE FROZEN FLAMBEAU

### Ice Fishing Contest

**Pre-tournament fun at the Rusk County Fairgrounds on Saturday, Feb. 15**

*Model Airplane Show, Lawn Mower Races, Music, & More!*

**Tournament at Leonhard Lane on Sunday, Feb. 16**

*Pancake Breakfast, Fishing Contest, Youth Fishing, Raffles, & More!*

*Proceeds go to recreation improvements on and around the Dairyland Reservoir and other Lions Club programs. Must have signed ticket to collect prizes awarded during this event.*

Sponsored  
by Ladysmith  
Lions Club

## CONTACT JREC BEFORE STARTING A RENEWABLE ENERGY PROJECT



There are rules concerning proper equipment, safety, liability, and metering. Please contact us before you start your project to be sure your plans comply, and your project goes smoothly. You can also find handouts on questions to ask before starting a renewable energy/distributed generation project and find out what the top 10 considerations are before installing a distributed generation system by going to [jrec.com/distributed-generation](http://jrec.com/distributed-generation).

### James Anderson, General Manager/CEO

1102 W. Ninth St. North, P.O. Box 99, Ladysmith, WI 54848

715-532-5524 • [www.jrec.com](http://www.jrec.com)

**After-hour emergency service, call 866-273-5111**

Find us on Facebook

*JREC is an equal opportunity provider and employer.*

**Denise Zimmer, Editor**



**Jump River Electric Cooperative, Inc.**

Since 1938

Your Touchstone Energy® Cooperative