

82nd ANNUAL MEETING JULY 25; INFORMATION INSIDE

Since 1940

WISCONSIN ENERGY *Cooperative* NEWS

July 2020



JREC ANNUAL MEETING

RESCHEDULED



THIS IS YOUR REGISTRATION STUB!

Please detach this mailing label along the dotted line and bring it with you to the annual meeting.



Jump River Electric
Cooperative, Inc.

Since 1938

Your Touchstone Energy® Cooperative

www.jrec.com

OFFICIAL NOTICE OF THE 2020 ANNUAL MEETING

Saturday, July 25, 2020

Ladysmith Lions Club Legacy Amphitheater
Memorial Park, Ladysmith, Wisconsin

Meeting Registration – 9:30 a.m.
Membership Business Meeting – 10 a.m.

The 82nd annual meeting of the members of Jump River Electric Cooperative has been rescheduled and is being moved to the Ladysmith Lions Club Legacy Amphitheater that is located east on Highway 8 in Ladysmith. Park and street parking available.

Action will be taken on the following items of business:

1. Approval of minutes.
2. Reports from the General Manager/CEO and Board President.
3. The election of three directors for a three-year term: one each from districts 3, 4, and 9.
4. Voting on a Proposed Article & Bylaw Amendments and on a Proposed Advisory Resolution.

Explanations of Proposed Article and Bylaw Amendments (the Rules & Resolutions Committee recommends votes for approval of all four amendments)

1. A Bylaw amendment to make sure members understand that an absentee signed ballot or an electronic vote cannot be withdrawn and that an in-person vote at the meeting cannot be substituted for the absentee signed ballot or electronic vote.
2. A Bylaw amendment to automatically constitute the elected officers as the Executive Committee of the Board without need for further action.
3. Article and Bylaw amendments to update the titles of the principal officers of the cooperative.
4. Amendments to eliminate references to memberships as tenants in common since all joint memberships are held as joint tenants with right of survivorship.

Explanation of Proposed Advisory Resolution (the Rules & Resolutions Committee recommends a vote against adoption)

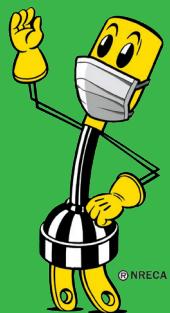
- A resolution to recommend a five-year moratorium on spending money on free lunches, gifts, scholarships, and charity
5. Such other business as may come before the meeting.

VOTING OPTIONS: One Vote Per Membership

In April, all members were provided a booklet containing ballots. All ballots that were returned in a signed envelope prior to the originally scheduled meeting date have been kept secure and will be counted.

Members who have not yet voted may still do so, in any one of four ways outlined in the Annual Meeting Rules found on page 15. Absentee ballots are available at both JREC offices and can be returned to either office by the deadline outlined within the Annual Meeting Rules.

We are focused on having a safe and lawful meeting that follows social meeting guidelines to ensure safety for our members and employees.



**IMPORTANT
REGISTRATION
CARD**

**This card will assist JREC employees
in registering you at the annual meeting on
Saturday, July 25, 2020.**

PRIZES – A \$10 energy credit coupon and a cinch tote will be given to each member (one per membership) who attends the business meeting.



JREC ANNUAL MEETING

RESCHEDULED



**Jump River Electric
Cooperative, Inc.**

Since 1938

Your Touchstone Energy® Cooperative 

The board of directors and management have rescheduled the 82nd Annual Meeting for July 25, 2020. A new location has been set, with safety and social distancing in mind. This in-person meeting has been condensed and it will be held at the Ladysmith Lions Club Legacy Amphitheater. We are focused on having a safe and lawful meeting. The Bylaws provide that the Rules & Resolutions Committee shall adopt rules and procedures for conducting the annual meeting. In order to conduct this year's meeting in a safe and effective manner, certain modifications of the rules and procedures originally adopted by the committee are needed. The updated rules and procedures approved by the committee follow.

2020 Annual Meeting Rules – Updated June 2, 2020

1. If it is feasible to proceed with an in-person, outdoor meeting on July 25 as planned, in the interest of health and safety to the maximum extent feasible voting at the meeting will be by show of member voting card that will be provided at registration. There will be no voice voting. The only ballot voting will be as described in #2, below.
2. In April, all members were provided a booklet containing ballots for the three director seats up for election this year, for four proposed Bylaw amendments, and for one member-submitted resolution. All ballots that were returned in a signed envelope prior to the originally scheduled meeting date have been kept secure and will be counted. Members who have not yet voted may still do so, in any one of four ways:
 - If you did not vote in April, you may mark and return the ballot from the April booklet, in a signed envelope, so that it is received at the JREC office by 4 p.m. on July 24; or
 - If you did not vote in April and no longer have the April booklet, you may call the JREC office no later than July 14 and ask for a new ballot to be sent to you, and you may then mark and return the ballot, in a signed envelope, so that it is received at the JREC office by 4 p.m. on July 24; or
 - If you did not vote in April and no longer have the April booklet, you may visit the JREC office no later than 3 p.m. on July 24, ask for a new ballot, and mark and return the ballot at that time; or
 - If you did not vote by absentee ballot in April or July, you may attend the annual meeting, request a meeting-day ballot, and cast that ballot up to the time the Chair calls the meeting to order at 10 a.m. (Ballots will not be accepted after that time).
3. The tellers may begin opening and counting the ballots prior to the opening of the meeting, to avoid unnecessarily extending the length of the meeting.
4. Pursuant to the Rules originally adopted by the Committee, any proposed resolution on policy affecting Jump River Electric Cooperative, Inc., was required to be submitted by February 25, 2020, the deadline included in the December, January and February *Wisconsin Energy Cooperative News (WECN)* mailed to each member.
5. The meeting will be conducted in accordance with Robert's Rules of Order Newly Revised, as supplemented by these Rules. The President as Chair of the meeting has appointed the Cooperative's Attorney, Niles Berman, to act as Parliamentarian of the Meeting.
6. Any speaker must be recognized by the Chair before speaking. Only members will be recognized by the Chair, and each member must give his or her name and address. Members are to limit their comments to two (2) minutes with any rebuttal limited to one (1) minute. The Chair shall be responsible for maintaining decorum during the meeting. Comments from members will be in order during old and new business sessions and after the President's, General Manager's, and Financial Reports have been given.

If you would like to review the three director seats up for election this year, the four proposed Bylaw amendments, and the one member-submitted resolution, go to jrec.com/cooperative-news and click on the April link. You can also ask for a copy of the *Wisconsin Energy Cooperative News* to be mailed to you along with the ballot booklet.



*Hey 2020 graduating high school seniors,
check this out...*

2020 WECA ESSAY CONTEST

Due to the cancelation of the Youth Leadership Congress caused by the Covid-19 pandemic, WECA is offering a unique scholarship opportunity. The scholarship that is generally exclusive to those who attend YLC is being extended to any high school or college freshman student whose primary residence receives electric service from a Wisconsin electric cooperative. Scholarships are awarded as follows to the authors of the top three essays:

1st place – \$1,000

2nd place – \$500

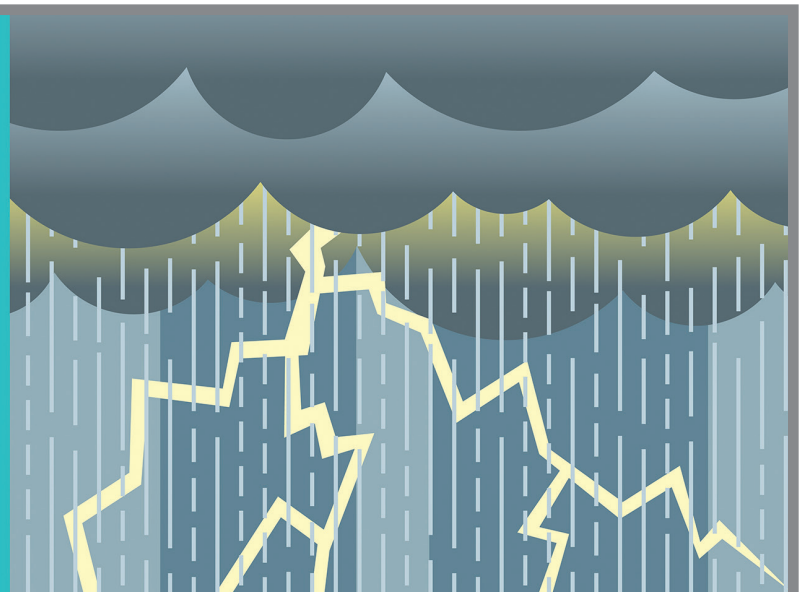
3rd place – \$250

You can find more information on page 6 of this issue. For full contest rules and a downloadable entry form, please go to www.weca.coop.

When Thunder Roars, Go Indoors!

Seek shelter indoors or in a hard-topped vehicle. If you can't get to shelter:

- avoid open fields and hilltops.
- stay away from tall, isolated trees and objects.
- spread out (if you're in a group).



Summer is peak season for one of the nation's deadliest weather phenomena—lightning. Lightning strikes year-round. Lightning can strike up to 10 miles from the area in which it is raining, even if you don't see clouds. This means if you hear thunder, lightning is close enough to pose an immediate threat.

Stay off your phone when you hear thunder as phone use is the leading cause of indoor lightning injuries in the United States. A direct strike is not necessary for lightning voltage to enter your home through phone lines,

electrical wires, cables, and plumbing.

Always report your power outage. Discover the various outage notification methods by clicking on the outage tab at jrec.com. More information on what to do if you lose power and safety measures you should take can also be found on this web page.

If you do nothing else after reading this article, please place our after-hour phone number (866-273-5111) in a place where everyone can find it, so no matter who is home, the outage can be reported.



GONE FISHING FOR PHISHERS!

Phishing is the fraudulent attempt to obtain sensitive information such as usernames, passwords, and credit card details by disguising oneself as a trustworthy entity in an electronic communication, like email. This mail appears to come from a bank or other service provider.

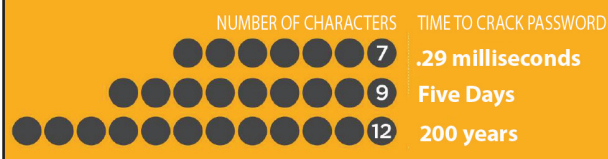
Passwords are essential for keeping your personal and financial information safe. Change them periodically and follow these tips from stopthinkconnect.org:

- **Make your password a sentence:** A strong password is a sentence that is at least 12 characters long. Focus on phrases that are easy to remember (for example, "I love country music."). On many sites, you can even use spaces.
- **Unique account, unique password:** Having separate passwords for every account helps to thwart cybercriminals. At a minimum, separate your work and personal accounts and make sure your critical accounts are well protected.
- **Lock down your log-in:** Fortify your online accounts by enabling the strongest authentication tools available, such as biometrics, security keys, or a one-time code through an app on your mobile device. Your usernames and passwords are not enough to protect key accounts like email, banking, and social media.

This website also provides tips on how to raise privacy-savvy kids and how to be a safe online shopper, and Wi-Fi dos and don'ts. These include limiting the type of business you conduct over open public Wi-Fi connections, and never logging in to key accounts such as email and banking. Also, if the subject line or email is vague, uses poor grammar, demands action, or has suspicious links, assume it is a scam or phishing email.

How long should your password be?

The length and complexity of a password has a direct impact on how difficult it would be to crack.



SALES TAX ON SUMMER ELECTRIC BILLS

A sales tax will be applied to your electric bill for electric usage in the months of May through October. According to Wisconsin Statute 77.54 (30) (a) 2, "Electricity and natural gas sold during the months of November, December, January, February, March, and April for residential use" are exempt from sales and use tax. This statute was enacted in 1995.

The state government regards electricity for residential use during the winter months as a necessity; therefore, electricity is exempt from sales tax during these months. "Residential use" is defined in the statute as a structure or portion of a structure which is a person's permanent principle residence. It does not include use in motor homes, travel trailer, other recreational vehicles, or transient accommodations.

If you feel you qualify for year-round tax exemption status, please confirm that you have a completed and signed Wisconsin Sales and Use Tax Exemption Certificate on file at JREC. If you do not, you will need to complete one. Forms are available from our office or at www.jrec.com and click on the Membership Forms link.



Easy Tips for Making the Summer Shift

- Do laundry early in the morning or in the evening after 7 p.m. using cold water when possible. Take advantage of free solar energy to dry your clothes outside on a clothes line.
- Longer daylight hours have arrived. Shut off unnecessary lights.
- Start the dishwasher after 7 p.m., then open the door when the rinse cycle is complete to let dishes air dry overnight.
- Utilize a programmable thermostat. Set the temperature to 78 degrees when no one is home.
- Draw curtains to keep strong sunlight from over-heating the interior of your home and increasing the use of air conditioning.



LOVE THE OUTDOORS?

BE SAFE OUT THERE

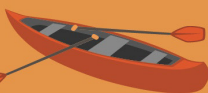


2/3

of lightning fatalities are associated with outdoor **recreational activities**.



Pay attention to weather forecasts **before you go canoeing or boating**. Get off the open water as soon as you **hear thunder**.



Do not use generators in enclosed areas. The same goes for grills, camping stoves or other small appliances that produce carbon monoxide.



Look up for power lines while fishing or sailing.

FACT: Fishing is the most common outdoor activity associated with lightning-related deaths.



Going for a hike?

If you hear thunder or see lightning, **do not seek shelter under a tree.**



X

Tent camping? Plan ahead, seek shelter in a hard-top vehicle or four-sided building during a storm or at the first sight of lightning.

For more information, visit:

Safe Electricity.org

RIGHT-OF-WAY BRUSH CONTROL HELPS WITH RELIABILITY, SAFETY

To ensure reliable continuity of electric service to our members, Jump River Electric Cooperative must from time to time adequately clear the right-of-way of tree problems to prevent outages and blinking lights. Trees in the power lines pose a threat to continued service. They're also a fire hazard, and a safety hazard for anyone who might climb a tree or cut/trim trees that are growing into the wire.

The cooperative will begin the individual treatment of the brush in the right-of-way again this summer. We are planning to use a selective herbicide to treat the brush and wood vegetation only. This will allow the grass to flourish.

The spraying will be completed by our contractor, Badger Unified Co-op Services (BUCS). Their employees have been trained, certified, and licensed in the proper application of the herbicide treatment. They will take great care not to treat near yards, gardens, orchards, or streams. Shrubbery and low-growing species that will not reach the power lines will not be treated.

BUCS will be working in the following townships this summer: Cleveland, Doyle, McKinley, Murray, Pershing, Ruby, Thornapple, and Wilkinson.

Additional information will be mailed to members in these areas prior to the brush control work being performed. If you have any questions, please call our office at 715-532-5524.

**JREC OFFICES WILL BE CLOSED
JULY 3 IN CELEBRATION OF
INDEPENDENCE DAY**

James Anderson, General Manager/CEO

1102 West 9th Street North • P.O. Box 99, Ladysmith, WI 54848

715-532-5524 • www.jrec.com

After-hour emergency service, call 866-273-5111

Find us on Facebook

JREC is an equal opportunity provider and employer.

Denise Zimmer, Editor



**Jump River Electric
Cooperative, Inc.**

Since 1938

Your Touchstone Energy® Cooperative

We may be looking for you!

Jump River Electric Cooperative has several former members who have not cashed their capital credit checks that were paid out in 2017. The list of names is also published on our website at www.jrec.net. Please contact us at 715-532-5524 or at jrec@jrec.com ONLY if you know the current address of someone listed.

In cases where the person is deceased, please call us if you know the contact information for a relative or benefactor who may have rightful claim to the capital credits. Any unclaimed checks will revert to the Wisconsin Federated Youth Foundation, Inc. The Foundation is a charitable tax-exempt trust established by the Wisconsin Electric Cooperative Association for educational purposes.

(List continued from last month)

KRAUSE, CRAIG	LIPPOLD, HENRY	MCDUGALL, LYDIA	NEIWEEM, BERNARD	PETKOVSEK, MAGGIE	RUDNICK, LOUIS	SOBECK, JOSEPH	VUKOVICH, MARK
KRAUSE, KATHRYN	LITTS, TERRY	MCGRATH, DAVID	NELSON, LEONARD A	PFISTER, MIKE	RUNNHEIM, TIM	SODT, KENNETH	WACHS, RAY
KRELL, RICHARD	LIVINGSTON, ELLEN	MCKEAN, FRANK C	NELSON, LESLIE	PIERCE, WILLIAM	RUSHMAN, FR. F	SOKOLOWSKI, ROSE A	WAGNER, GEORGE
KRIZAN, BERNICE	LIVINGSTON, LARRY E	MCKEEVER, MICHAEL	NELSON, SALLY	PISCHE, VINCENT M	RUSHTON, JOHN	SOLUM, OSCAR O	WALBERG, KEVIN
KRIZAN, HELEN	LIVINGSTON, ROY	MCKINLEY, MARIA	NEUBURGER, LOUISE	PLAZA, CARL	RUSSELL, RICHARD JR	SONNENTAG, SHELLIE M	WALL, HARLEY O
KROENING, WENDY	LLOYD, LARRY	MEADE, PAUL	NICHOLS, CHAS.	POOLE, MAX	RYKAL, ROBIN	SOO, LINE RAILROAD	WALLACE, RONALD
KROEPLIN, JAMES	LODAHL, ROGER	MEALEY, RICHARD	NICHOLS, DEANNA	POTACK, CYNTHIA M	SABIN, BENJAMIN	SORENSEN, ELIZABETH M	WALTER, DONALD
KROGNESS, STEPHEN	LOISELLE, MICHAEL	MEIER, RONALD L	NICHOLS, JODI	POTTER, RAYMOND	SAHLSTROM, CARL	SPENCER, DEBRA	WALTER, FRANK
KRUCKENBERG, MORRY	LORVIG, LORRAINE	MELBERG, STEVEN	NICKENCE, ALAN	POTTER, TROY	SANBORN, DAVID L	SPENCER, LEON	WALTER, PETER
KRUGER, ROBERT E	LUCAS, ROBERT T	MELTON, TRISTAN	NIED, WALTER	POWERS, ELSIE	SANDEN, JON V	SPOONER, NORMAN	WANNEMACHER, DONALD
KRZEBETKOWSKI, DANIEL	LUCENTE, JOSEPH A	MERRILL, WILLIAM	NIELSEN, ERIC	POWERS, JEROME	SASSOR, DENNIS R	SPRAQUE, CLARK	WASHBURN, STEVE
KUBIAK, ROBERT	LUCZYNSKI, VAL	MERTENS, VICKI O	NORMA'S KITCHEN CAFE	PRACHT, ETHEL C	SAVSTROM, RUSSELL	SPURBECK, LANDIS E	WASHLOW, ROBERT
KUBOSCH, KATHY	LUFKIN, EDWARD	MEYER, JERRY	NORTH WOODS RETREAT	PRADVICA, DAVID	SCHAEZTER, DAVID	SRACHTA, JOSEPH	WATERMAN, PAUL
KUEHNE, ROBERT	LUND, JERRY	MEYER, RALPH	NOVACEK, MARCIA K	PREBS, SCOTT	SCHAFER, RICHARD	STACHURA SKIPWORT, FRANCES	WATRY, MICHAEL J
KULAK, ROBERT	LUNDEEN, MARIBETH	MICHALSKI, MARION J	NOVAK, JAMES A	PRECISION, PIPELINE	SCHAMENS, SCOTT	STANSBURY, JAMES	WATTS, EDWARD
KUYKENDALL, KRISTINA	LYLE, JAMES W	MID WISCONSIN BANK	NOVAKOVIC, ELLI	PREDOTZER, JANET	SCHIESL, JACK	STASSEN, HENRY	WAYSTEDT, DENNIS
KUZERA, ALICE	LYNCH, LARRY	MIDWOOD, WILLIAM R	NOYCE, LISA	PRESTON, JEREMY	SCHILLING, DANIEL	STEINKE, JAMES	WEAVER, JEROLD D
LABRECHE, WILLIAM SR.	LYNK, LEILA	MIKE, MARLA M	O'BRIEN, JOHN E	PRESTON, LEE	SCHLAEFFER, MARILYN	STEINKE, RICHARD	WEBB, R.
LACOF, KEN	LYNK, MARGARET	MIKUT, JOHN S	OESTERREICHER, PAUL	PRISSEL, ROGER	SCHLEY, JEFF	STEINKE, RICHARD	WEBER, RUBEN
LAIER, JEAN C	MABIE, RICHARD	MILES, ALBERT	OHEARN, JOHN	PROCHASKA, ADELE	SCHMARJE, BEA	STEVENS, BARBARA M	WEBER, ZACHERY
LAMBERT, VERNON	MACARUSO, LINDA	MILLER, BRYAN	OLIVO, MARC	PROSTKE, K K	SCHMIDT, ARTHUR	STEVENS, JILL	WEBSTER, JAMIE
LAMBRECHT, HENRY	MADISON, RICHARD	MILLER, CHERYL	OLLINGER, RICHARD	PRZYBYLSKI, STEVEN	SCHMIDT, GREG	STEVENS, WAYNE	WEBERMAN, BRETT
LANGEL, DEBRA	MAGNUSON, GARRETT	MILLER, CLYDE	OLMSTEAD, CRYSTAL	PTACEK, FRANKLIN M	SCHMITT, MICHAEL	STICKROD, CLARENCE	WELLNER, GEORGE
LANGLAND, BARBARA	MAGNUSON, THOMAS	MILLER, FLORENCE	OLSEN, ROGER	PURVIS, DONALD CII	SCHMUGLER, BARBARA A	STINE, GREGORY D	WENZEL, PAUL
LAPOINTE, CHARLES	MAHY, GENE K	MILLER, GREGORY A	OLSON, DONALD N	PUZA, TIMOTHY	SCHNEIDER, GERALD W	STOHR, NORMA	WEST, DONNA
LAPOINTE, CRYSTAL M	MANSHEIM, AMANDA	MILLER, HOPE	OLSON, JULE	PYPER, JOY	SCHOENECKER, SCOTT	STOLL, EDWARD	WEST, SCOT W
LARONGE, THERESE	MARCO, JANET	MILLER, LISA	OLSON, LISA	QUADERER, CAROLYN	SCHRADER, JUDITH A	STONE, BASIL C	WESTABY, ISIAH
LARSON, ARLENE	MARCON, DONALD	MILLER, LLOYD B	OLSZEWski, LEON E	QUADERER, DENA	SCHRAEDER, MARK	STONE, HOWARD	WESTLEY, LORRILEE
LARSON, DON A	MARKEY, E. L	MILLER, MARSHALL	OLYNICK, INC, JOHN S.	QUADERER, GARY LJR	SCHREIBER, MELISSA	STORY, DARREL	WETTESLON, RONALD E
LARSON, GEORGE	MAROS, THEODORE	MILLER, MARY L	OOLYMAN, DAN M	QUADERER, JOHN G	SCHROCK, JOSEPH	STOUT, ANDY	WEYER, CHRISTOPHER
LARSON, JAMES	MARSALA, RICHARD	MILLER, NANCY	OPACHAN, CARRIE	QUADERER, LINDA	SCHROEDER, FLORENCE	STRAND, GERALD M	WHEELER, JERRY
LARSON, MARGE L	MARSHALL, NORA	MILLER, SCOTT	OPHEIM, STEVE	QUAGON, JOHN	SCHULTZ, ALLAN E	STRAND, ROBERT E	WHITE, DEANNA
LARSON, OWEN	MARTIN, FRANCIS E	MILLS, TAYLOR	ORHEIM, TRACY	QUINLAN, MICHAEL	SCHULTZ, KARY	STRAUB, DONALD D	WHITE, RAYMOND
LATZ, BRADLEY	MARTIN, JEREMY	MINALTOSKI, PAUL R	O'ROURKE, JAMES M	QUINLISK, WARREN	SCHULTZ, ROGER	STRAUCH, REINER	WHITE, WILLIAM
LAUNSPACH, WM	MARTIN, JERRY S	MINDER, ROBERT SR	ORTMANN, DOROTHY	QUINN, LEE	SCHUSTER, SANDRA L	STREUBEL, STEVEN	WHITEHEAD, CHARLES R
LAURITZEN, HERBERT	MARTIN, JOHN	MISICKA, HENRY	OSTERTAG, RICK	RADCLIFFE, LEW	SCOLA-OESTREICH, ROSE	STROJNY, RICHARD J	WI DEPT OF NATURAL
LAVIGNE, ANDREA	MARTIN, LYLE	MITCHELL, GARY	OSTROWSKI, ANTONITTE	RADWANSKI, ELIZABETH	SCOTT, GENE	STROMBECK, PAUL R	RESOURCES
LAVINE, DONALD W	MARTIN, MARGARET	MITCHELL, LEON	OWENS, MARGARET	RADY, DAVID A	SEATON, SHARON J	STROP, PATRICIA J	WICKE, KATHY
LAVINE, TONY	MARTIN, SHIRLEY	MOODY, ARTHUR	PACHOLSKI, MARY J	RANSOM, CHRISTOPHER	SEDDON, HUGH K	STROSCHEN, STEVEN L	WIGGINS, LINDA M
LAWRENCE, JANE	MARTIN, ZEEGWAN	MOODY, JEFFREY	PACHUTA, MATTHEW	REDWINE, CRAIG	SELKOW, VIOLET	STUDELL, MILFORD	WILBER, CANDICE
LCO GOVERNING BOARD	MARTINSON, DEAN	MOORE, JOHN N	PADDOCK, JAMES	REEDY, GEOFFREY	SENG, TONYA	SUK, LEONARD	WILDER, ALVIN J
LCO ON EAGLES WINGS	MATHIS, JAMES	MORAREND, HARVEY	PAGEL, CHERYL	REICH, AMANDA	SERIER, KEN	SUMMERS, KENNETH	WILDER, MICHAEL
SAFETY	MATSUI, COREEN A	MORAREND, JESSE	PARKER, JEREMY	REILLY, GREGORY	SHABAIASH, JOSEPH	SURA, RICHARD W	WILES, NANCY
LCO YOUTH CENTER	MATTHEWS, JON	MORROW, ADELE	PARMETER, RICK	REPETNY, ROBERT	SHARLOW, MITCH	SUTTEN, IRENE	WILLIAMS, DEWEY
LE CLAIR, DAVID	MATTSON, JAMES	MROZAK, DAVID	PARZ, STELLA	REPPERT, DIANE	SHAW, JAMES M	SVENDAL, GLADYS	WILLIAMS, DICK
LEACH, JOHN W	MAXWELL, WILLIAM G	MUDGETT, SHARON	PASCHKE, RICHARD	RETTZLAFF, PAT	SHAY, MARVON	SWANEY, WM	WILLIAMS, HEIDI
LEAVENS, DONALD	MC CORD, IAN	MUDLER, RICHARD M	PAWLOWSKI, MATTHEW A	RICH, JON D	SHEETS, WILLIAM	SWEDA, MATT	WILLIAMS, JUDY
LEETH, KEVIN	MC CORD, JAMES	MUELLER, MARK	PEARSON, PER	RIEKE, DAVID	SHELTON, LEWIS	TREPANIER, TROY	WILLIAMS, ROBERTA
LEHMANN, DONALD	MC CORMICK, ROBERT	MULLEN, ROBERT	PECK, WANDA	RINCHICH, ALBERT	SHEPHERD, JACK	TREPANIER, WALTER	WIMER, RAY
LEIN, TIMOTHY	MC CORMICK, WILLIAM	MULOCK, JEFF	PEDERSON, GORDON	ROACH, BEN A	SHIFFLETT, RON	TRUDEAU, RALPH	WIRZ, WALTER
LEPINE, MICHELLE	MC DERMOTT, FRANK	MURAWSKI, WALTER J	PERONA, VERA	ROBBINS, RICHARD J	SHOOK, RANDY	TRUE, GAS	WITHINGTON, RICHARD
LESIK, ANDREW	MC DONALD, MATTHEW	MURPHY, JAMES	PERRITT, DANIEL	ROBBINS, JAMES P	SHORT, MARVEL	TRUITT, RONALD	WITTLER, LEO
LESNESKI, CHRISTOPHER	MC GUIGAN, WM	MUSIAL, NORINE	PERRY, BONITA	ROBERTSON, SERENA	SHREWSBERRY, CANDY L	TRUSTEES OF TEAL LAKE	WITTMAN, BRIAN
LESNIEWSKI, LARRY	MC KEE, ROBERT	NACZAS, CAROL	PETERSON, BRETT	ROBINSON, DAVID J	SIMPSON, MICHAEL	TRYZNA, JOSEPH J	WOJCICH, NANCY
L'HEUREUX, MAURICE	MC KNIGHT, JAMES	NAROG, JOHN A	PETERSON, MARVIN	ROGERS, BERNARD J	SIMPSON, ROBERT	TSCHANZ, RICHARD	WOLF, DANIEL
LIBBEY, KATHY	MC PEAK, MELISSA	NATZKE, MARIE	PETERSON, RUTH	ROHRER, ERNEST	SINETTE, JANET	TYRCHA, DONALD	WOLGAST, LELA
LIEDL, MARK	MCCRACKEN, KEITH	NEAS, JENNIFER	PETERSON, STANLEY	ROMPALA, LORETTA	SKIDMORE, K. C	UDZIELA, DAVID J	WOLTERS, NANCY
LINDQUIST, MARK	MCDONALD, ROB	NEBEL, BRUCE W	PETERSON, WM	ROSE, PATRICK	SKINNER, RUTH	URSICH, DANIEL	WOOD, KENNETH
LIPOFSKI, ED	MCDONALD, THURMAN	NEFF, MARY	PETIT, MARUICE	ROYCE, YVONNE	SKOGSTAD, HAROLD	UZLIK, RONALD	WOOTEN, BARBARA
					PJR.	VACHO, LISA	WPT LTD
					SKOVVAN, LEO	VALENTINE, ASHLEY	WRIEDT, KENNETH
					SKOWZGIRD, RONALD	VALENTINE, LINDA	WRY, BRUCE
					SKYE, ELLEN	VAN, DE VOORT BRIAN	YEAGER, ANNE
					SLACK, ANTOINETTE	VAN, PATER ROY	YODER, MERVIN
					SLEETH, VIRGINIA	VAN, WEY BETTY	YOUNG, JANE A
					SMALLEY, HAROLD	VANDERPORT, RAY	YOUNG, MARLENE
					SMIETANA, MARVIN	VANDERSLICE, ROBERT	YOUNG, SCOTT
					SMIRL, DAVID	VANGILDER, ASHLEY	YOUNGSTROM, DONALD Z
					SMITH, BONNIE	VERMILYEA, ROBERT K	ZECH, DOUGLAS
					SMITH, CODY A	VODISEK, MARY	ZEHE, RICHARD
					SMITH, CRAIG	VOHS, MATTHEW	ZELINSKI, BETTY
					SMITH, HARRY L	VOIGHT, HELMI	ZENGAFFINEN, BEAT
					SMITH, JARRELL	VOIGHT, MARIAN	ZERA, FRANK
					SMITH, JARRELL	VOJTASEK, ELIZABETH	ZORN, JAMES E
					SMITH, OWEN C	VON, WALD BERNARD K	ZUPAN, MICHAEL
					SMITH, ROY D	VREELAND, JIM	ZWADLO, MICHAEL
					SNYDER, KATHLEEN		

JREC OFFICES RE-OPEN WITH EXTENDED HOURS!

Office Hours are now 7 a.m. to 5 p.m. Monday–Thursday
8 a.m.–4 p.m. Fridays in Ladysmith; Hayward office closed on Fridays

Social distancing guidelines will continue to be followed while in the lobby to help protect our community and keep our employees safe, healthy and on the job for you.

Simple life is a
happy life.



You can relax around the campfire when you are enrolled in AutoPay through SmartHub. Our free, checkless payment plan offers both convenience and savings. While you're there, check out the other great benefits SmartHub has to offer:

- Check your usage
- Manage your account
- Sign up for paperless billing
- Report outages
- Communicate directly with the co-op

Before planning your next outdoor adventure, sign up for SmartHub online. It's JREC's FREE and mobile online payment system. Click on the Pay Bill Online link at the top of the page and follow the prompts to create your username and password.

Questions? Call 715-532-5524.



TAKE A HIKE

from slow internet speeds



SIGN UP FOR Viasat TODAY!
UNLIMITED PACKAGES STARTING AT

\$59.99

Up to 30 mbps download speeds.

***JULY ANNUAL
MEETING SPECIAL**



Jump River Electric
Cooperative, Inc.

Since 1938

Your Touchstone Energy® Cooperative

www/jrec.com

*\$20 OFF FIRST THREE MONTHS

After you use the following amount of data, we may prioritize your data behind other customers during network congestion: Bronze 12 (40 GB), Silver 25 (60 GB), and Gold 30 (100 GB). Free standard installation fee available only to new customers. Minimum 24-month service term. Taxes apply. Speeds are "up to," are not guaranteed, and will vary. See jrec.com for more details. *Offer ends July 31, 2020 and may change or be withdrawn at any time.