



James Anderson  
General Manager

## PAST AND PRESENT

This month is a great time to look back and remember our history, and to see how far we have come in a relatively short span of time.

Jump River Electric Cooperative was founded in 1938 when neighbors worked together to bring electricity to our rural community. Big investor-owned power companies thought they couldn't generate enough profit, so they bypassed our rural areas. Back then, there were frequent meetings among neighbors to discuss the formation of the cooperative.

On November 10, 1938, Articles of Incorporation were filed by Ward Herrick, Norbert Scheuer, Bertha Krueger, Albert Zastrow, Catherine Martin, Ernest Skistad, Eugene Lambert, Frank Skabroud Jr., and John L. Konsella. The cooperative, on behalf of the member-owners, committed to provide our rural community with electricity. Once established, JREC annual meetings were the must-attend event of the year.

In 1940 JREC had 150 miles of power lines, 179 member-owners, and JREC employed 32 people.

JREC had a total plant value of \$104,000, and our average monthly kilowatt-hour consumption was 5,144 kilowatt-hours.

Fast forward to today: JREC has over 1,760 miles of power lines in six counties, 8,444 members-owners, and employs 24 people. JREC has total asset values of \$37,118,086, and our average monthly kilowatt-hour consumption is 7,573,000 kilowatt-hours. JREC has returned over \$7,500,000 to our member-owners in the form of capital credits since our founding in 1938.

This year will mark JREC's 80th birthday. We hope that our annual meeting will be the must-attend event that it was in past years. Please plan on attending and celebrate with other member-owners this milestone in our history.

We understand the spirit that helped create this co-op must

be continually nurtured. While times and technology continue to change, our commitment to you will not. As we continue to move toward the future, you can be confident JREC will commit to explore new ways to help our members and our community. We know we must keep pace as technology and consumer tastes evolve. As always, we welcome your participation as we plan for the future.



1. First JREC headquarters. 2 & 3. A 1950s JREC annual meeting. 4. Employees Carl Hoff and Leo Johnson. 5. Board president Mel Pedersen (center) presents two original incorporators, Frank Skabroud Jr. (left) and Albert Zastrow (right) with electric lamps. 6. An early co-op power wagon.





# Giving back to the community

**JEANS DAY DONATIONS:** Richard Moore of the Ladysmith Lions Club recently accepted a \$100 check for the new Ladysmith Legacy Theater from Jump River Electric Cooperative's (JREC) Work Order Accountant Jessica Bingham (right). This money was raised by JREC employees through their Friday Jeans Day charitable fundraiser.

Earlier in the month, the board of directors of Jump River Electric Cooperative also approved a donation to this same project. These donations represent the cooperative's commitment to the communities they serve.



Children's Miracle Network, Women of Courage, Meals on Wheels, and Partners of Rusk County Memorial Hospital



warming blanket fund (pictured above) also received "Jeans Day" donations from the JREC employees.



**GIANT STOCKING WINNERS:** Many cooperative members entered their little ones' names into the giant stocking drawing, held annually in December at JREC. The three winners are shown next to their stocking full of toys. Winners were 4-year-old Eli from Hayward (above left), 10-year-old Logan from Gilman (above right), and 8-year-old Morgan from Tony (below). JREC General Manager



Jim Anderson is also shown in the pictures presenting the stockings to the winners. These children were full of smiles as they boxed up their toys to take home and were very excited to share their winnings with other siblings.

A special thank you goes out to member Mark Tamm of Hayward for donating two of his rocking moose chairs again this year. What a wonderful gift for the children.

**OPEN HOUSE ENJOYED BY MANY:** Many members stopped by and enjoyed hot coffee or apple cider and fresh cookies made for the holiday open house held in December. There were drawings at both the Hayward and Ladysmith offices for a ham, fruit box, JREC gift bag, and maple syrup. Those fortunate winners were as follows:

**Ham –**

Jackie Eckerly of Couderay and Mrs. Thure Osuldsen of Ladysmith (pictured at right with MSR Vicky Ringstad)



**Fruit Box –**

Candace Swehla of Hayward and Carmen Geisler of Bruce

**JREC Gift Bag –** Kathy Amrhein of Hayward and Roberta Dysh of Winter

**Maple Syrup –** Douglas Decora and Mike Isham Sr. of Courderay; Tom Goetsch, Walter Dymowski, Joe Hayer, and Diane Martinson of Hayward; Gayle Jenness of Bruce; Joan Fijalkiewicz of Conrath

(pictured at left); Mary Ann Schneider of Glen Flora; Dewey Kaiser of Ingram; and Dave Hraban and Shirley Hraban of Ladysmith.



Thank you to all who were able to come in during the open house. It is always nice to see you!

## POLICY UPDATES

A new policy has been adopted by the board of directors that outlines how the director search and selection process is to be handled to fill vacancies that may occur on the board as defined by Article IV, Section 6, of the bylaws. This policy can be found under policy bulletin 100.

Along with this new policy, the board also amended Policy 85 – Attendance by Members at Regular Meetings of the Board of Directors. Changes made help to define what is required when making a request to attend a regular board meeting and what is required if a member wishes to present any written materials to the board.

If you have any questions regarding these policies, please contact our office.

## HAVE YOU MADE A SWITCH?

As people utilize their cell phones more and eliminate their land lines, we find that we no longer have a valid phone number or the correct primary phone number on record. Therefore, we are not able to contact our members to give them important information about their electric service or scheduled maintenance outages. Having the correct primary phone number on record also helps you when calling the cooperative's after-hours call center for assistance with outages or emergencies.

The energy bills mailed on February 8 will list your account's phone and email (if any) information on record. Please verify and update your number, ensuring the one listed is the primary number. Members can also update their information by calling the office.

We only use this information to contact our members with information related to electric service. We value your privacy, and do not use or sell this information for any other purposes.

Our goal is to continue to provide you with safe, reliable, electric service.



## OVER \$10,000 IN JREC SCHOLARSHIPS AVAILABLE IN 2018

Jump River Electric Cooperative will be offering a variety of scholarships to its active members or their dependent children. These scholarships are as follows:

**Get ready 2018 high school graduates, JREC will be awarding 22 \$400 scholarships to area students.** The \$400 JREC Scholarships are available to local graduating seniors whose parent(s) or legal guardian(s) are active members of JREC and are currently attending one of the following high schools: Bruce, Flambeau, Gilman, Hayward, Ladysmith, Lake Holcombe, LCO, Rib Lake, Stanley-Boyd, Chetek-Weyerhaeuser, and Winter. Two scholarships will be awarded per school. Contact your school's guidance counselor for a scholarship application.

**\$500 JREC-John Hirschfeld Jr. Memorial Lineworker Scholarship** – Members wishing to enter a one-year Electric Power Distribution/Lineworker post-secondary school program can apply for this scholarship. This includes local graduating seniors whose parent(s) or legal guardian(s) are active members attending one of the 11 schools outlined above, or at-large (non-traditional) active members.

**\$500 JREC-Allen Beadles Memorial Scholarships** will be awarded to two at-large (non-traditional) active members who are continuing their post-secondary education.

**\$500 JREC-Charles Kagigebi Memorial Scholarship** will also be available to one at-large (non-traditional) active member attending the LCO Community College.

An at-large (non-traditional) student is defined as follows: Parent(s) of a dependent student or self is an active member of JREC and has received his/her GED or high school diploma for a minimum of one year prior to applying for the scholarship.

Monies for these scholarships come from the Federated Youth Foundation, which is funded through unclaimed capital credits. Deadlines vary by school and application type. Applications can be picked up from the schools' guidance counselor, where applicable, or online at [www.jrec.com](http://www.jrec.com).

### Additional Scholarship Opportunity – Charles Van Sickle Scholarship

The Federated Youth Foundation (FYF) has issued an invitation for students to apply for the third annual Charles Van Sickle Scholarship. The \$2,000 scholarship, to be awarded this spring, will go to a pre-law or law student who has an interest in pursuing a career in cooperative law. In addition to pre-law or law school enrollment and an interest in cooperative law, eligibility criteria include Wisconsin residency. A minimum cumulative grade point of 3.0 on a 4.0-point scale is also required. Preference will be given to students whose parents or grandparents are members of cooperatives, credit unions, or mutual insurance companies. Detailed information about required materials and how to apply can be obtained by contacting FYF Executive Director Ethan Giebel at 608-416-3318.

The scholarship is made possible by an endowment established in 2013 to honor Wisconsin's renowned electric cooperative lobbyist and attorney, the late Charles Van Sickle. Application materials should be sent to Giebel at the Federated Youth Foundation, Inc., 1 South Pinckney Street, Suite 810, Madison, WI 537032869. All applications are due at the Federated Youth Foundation office no later than April 1.





## it's gotta go! APPLIANCES INVENTORY CLOSEOUT

A variety of GE® and Hotpoint appliances are in stock and ready for you to pick up or have delivered. Now is the time to buy when prices are this low. Stop by the showrooms located at both the Ladysmith and Hayward offices or call today for more information on what is available.

As announced last year, JREC will not be stocking or selling appliances once the existing inventory is sold. That's why you can't afford to wait to replace any old appliances or upgrade to a more energy-efficient model from what you currently have.

***Be sure to take advantage of these great deals while supplies last!***

## OPERATING AN ELECTRIC SPACE HEATER = HIGHER ELECTRIC USAGE

Throughout the winter months, our office receives calls from members regarding high electric usage. For many, the culprit tends to be the use of a portable electric space heater.

Even though all electric space heaters are 100 percent efficient, they still use a considerable amount of electricity if used regularly. If you must, use an electric space heater for supplemental heat in a small area. They are not designed to heat your entire home. For an approximate operating cost of an electric space heater, use the following formula:

$$\frac{\text{Watts}}{1,000} \times \$0.1045/\text{kWh} \times 8 \text{ hours of operation} = \text{cost}$$

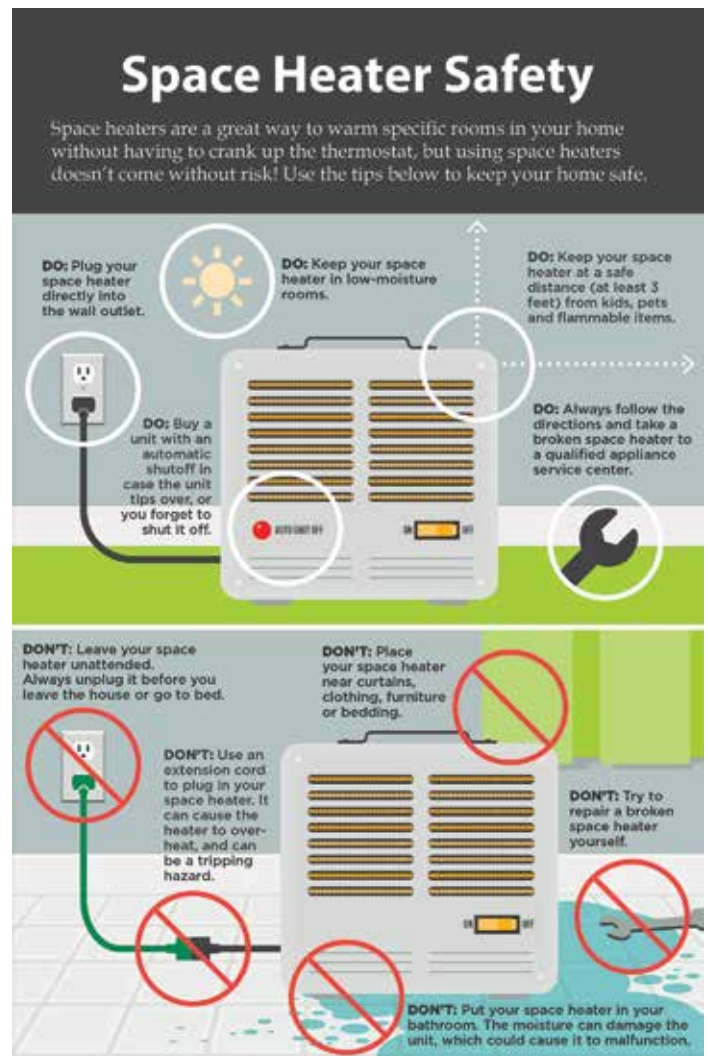
For example, a 1,500-watt space heater operating eight hours a day for 30 days costs \$37.62 per month to operate. There are more economical choices available to heat your home. Contact Jump River Electric Cooperative to learn more about cost-effective electric heat options and our load management program.

If you don't have a space heater and you feel your usage is too high, we recommend that you pick up or download a free copy of "Use Energy Wisely Guide" at [www.jrec.com](http://www.jrec.com). This booklet will guide you through a complete self-assessment of your family's unique energy needs. The guide includes an extensive, detailed list of appliance and equipment electric use amounts and a convenient calculator to estimate your costs.

Another step is to stop and listen. Do you hear anything running when everything is supposed to be turned off? For example, is the water pump running when water isn't being used in the home?

If you feel an appliance could be costing more than it should, check out an electricity usage monitor at our office or at a local library. You can easily measure by the hour, day, month, or year to figure your costs.

Please call our office if you need additional assistance.



### James Anderson, General Manager

1102 W. Ninth St. North, P.O. Box 99, Ladysmith, WI 54848  
715-532-5524 • [www.jrec.com](http://www.jrec.com)

**After-hour emergency service, call 866-273-5111**

*JREC is an equal opportunity provider and employer.*



**Jump River Electric  
Cooperative, Inc.**

Since 1938

Your Touchstone Energy® Cooperative